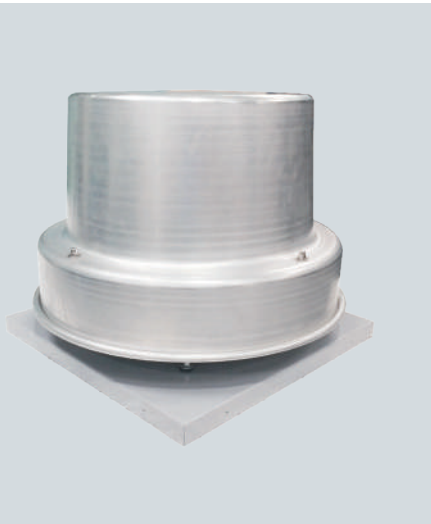




Roof Exhaust Downblast



Maico Gulf certifies that the DYNAIR model FCS are licensed to bear the AMCA Seal. The ratings shown are based on tests and procedures performed in accordance with AMCA Publication 211 and AMCA Publication 311 and comply with the requirements of the AMCA Certified Ratings Program. Performance certified is for installation type C – Ducted inlet, Free outlet. Power rating (watts, kW, or BHP) includes transmission losses. Performance ratings do not include the effects of appurtenances (accessories).

GENERAL DESCRIPTION

FCS -D (Direct drive) and FCS-B (Belt drive) fans are ideal for general purpose exhaust applications including bathrooms, garages, general kitchen areas, offices, churches, dormitories, factories, large warehouses and other relatively clean air applications.

They feature a weather-resistant, seamless spun aluminum housing which works in conjunction with special wheel design and deeply spun inlets to provide smooth and quiet airflow through the ventilator.

Wheels are backward inclined centrifugal curved for higher efficiency and quieter operation.

CONSTRUCTION (DIRECT DRIVE)

- Base frame made from sheet steel in HDG.
- Backward curved wheel in aluminum / cold rolled sheet steel.
- Motor: Asynchronous single / three-phase TEFC motor manufactured according to IEC standard. Suitable for 60 Hz supply.

CONSTRUCTION (BELT DRIVE)

- Belts and Drives: Belts shall be oil and heat resistant. Drives shall be precision machined cast iron type, keyed and securely attached to the wheel and motor shafts.
- Self-Aligning Bearings: Heavy-duty bearings are sized for a minimum L50 life in excess of 200,000 hours of operation. 100% factory tested, they are designed for air handling applications.

ACCESSORIES

- Gravity shutter
- On/ Off switch