



TMF In - Line Centrifugal Fans



GENERAL DESCRIPTION

The TMF is a series of centrifugal in-line fans with the advantage, typical of axial fans, to convey air along the same axis of the impeller. This feature, the limited dimensions and the standardized inlet and outlet sizes grant a particular ease of installation. The low noise level and the good pressure head makes them ideal for industrial and residential installations in extracting hoods and small exhausting plants, since they can be installed in any point along the duct or at the duct ends, either in intake or exhaust. They are suitable to convey clean air up to a maximum temperature of -10 to 60°C.

CONSTRUCTION

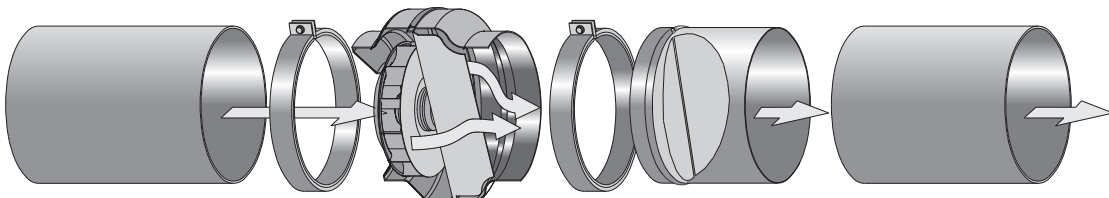
- Casing in steel sheet is protected against atmospheric agents by epoxy paint.
- Single-phase electric ball-bearing motor with non-self resetting thermal cut-out is particularly suitable for speed regulation.
- Backward curved centrifugal impeller with high efficiency and low noise level. Statically and dynamically balanced according to ISO 1940.
- Down stream guide vanes for improved efficiency.
- External electric connections enclosed in a terminal box in self extinguishing technopolymer with IP44 protection.
- Performance in accordance with AMCA standard 210 and 300.
- Fans are supplied with fixing brackets and manufactured in galvanized steel sheet protected against atmospheric agents by epoxy paint and completed with screws and wall plugs.

ACCESSORIES (UPON REQUEST)

- Speed regulators.
- Back-draught shutters.
- Collars for fixing to the duct.

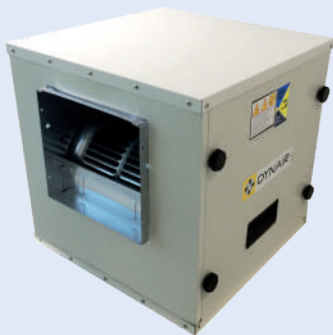


Maico Gulf certifies that the DYNIAIR model TMF are licensed to bear the AMCA Seal. The ratings shown are based on tests and procedures performed in accordance with AMCA Publication 211 and AMCA Publication 311 and comply with the requirements of the AMCA Certified Ratings Program. Performance certified is for installation type C – Ducted inlet, Free outlet. Performance ratings do not include the effects of appurtenances (accessories).



> CAB-D

Direct Drive Double Inlet Box Fans



GENERAL DESCRIPTION

The fan of the CAB-D series are particularly designed for air extraction, supply or filtration. Their main characteristic is the low noise level which makes them ideal for urban environments (apartments, houses, restaurants, gymnasiums, offices) and industrial sites where radiated noise is a problem. The low noise level is due to that is plenum, lined with acoustic material that allows a remarkable reduction of noise level inevitably generated by the fan. The blower consists of a double inlet forward curve centrifugal fan with built-in motor.

CONSTRUCTION

- Profile-less cabinet is manufactured in PPGL sheet with removable access panel to allow easy access to the fan and motor.
- The blower is fitted using suitable support feet and is completely isolated from the casing by anti-vibration mounts and gaskets.
- Acoustic lining in self-extinguishing techno-polymer.
- DIDW forward curved with direct drive built-in asynchronous motor
- Flanged inlet and outlet for ease of duct work.
- Motor IP 55

BEYOND STANDARD PRODUCT

- Different discharge orientation.
- Electronic and self-transformer speed regulators.
- Pre-filtered section.
- Customised cabinet size.
- Construction with the Aluminum extruded profile.
- Versions with double skin panels (20 mm thick) only in AL extruded profile.
- Blowers with EC motors are available on request.



Maico Gulf LLC certifies that the DYNAIR Model "CAB-D 3/4 and 3/8" shown herein are licensed to bear the AMCA Seal. The ratings shown are based on tests and procedures performed in accordance with AMCA Publication 211 and comply with the requirements of the **AMCA Certified Ratings Program**.



Maico Gulf LLC certifies that the DYNAIR Model "CAB-D 7/7 to 12/12" shown here in are licensed to bear the AMCA Seal. The ratings shown are based on tests and procedures performed in accordance with AMCA Publication 211 and AMCA Publication 311 and comply with the requirements of the **AMCA Certified Ratings Program**.

> BOX-D

Direct Drive Double Inlet Box Fans



GENERAL DESCRIPTION

The fan of the BOX-D series are particularly designed for air extraction, supply or filtration. Their main characteristic is the low noise level which makes them ideal for urban environments (apartments, houses, restaurants, gymnasiums, offices) and industrial sites where radiated noise is a problem. The low noise level is due to that is plenum, lined with acoustic material that allows a remarkable reduction of noise level inevitably generated by the fan. The blower consists of a double inlet forward curve centrifugal fan with built-in motor.

CONSTRUCTION

- Profile-less cabinet is manufactured in PPGL sheet with removable access panel to allow easy access to the fan and motor.
- The blower is fitted using suitable support feet and is completely isolated from the casing by anti-vibration mounts and gaskets.
- Acoustic lining in self-extinguishing techno-polymer.
- DIDW forward curved with direct drive built-in asynchronous motor
- Flanged inlet and outlet for ease of duct work.
- Motor IP 44

BEYOND STANDARD PRODUCT

- Different discharge orientation.
- Electronic and self-transformer speed regulators.
- Pre-filtered section.
- Customised cabinet size.
- Construction with the Aluminum extruded profile.
- Versions with double skin panels (20 mm thick) only in AL extruded profile.
- Blowers with EC motors are available on request.



Maico Gulf LLC certifies that the DYNAIR Model "Box-D 3/4 and 3/8" shown herein are licensed to bear the AMCA Seal. The ratings shown are based on tests and procedures performed in accordance with AMCA Publication 211 and comply with the requirements of the **AMCA Certified Ratings Program**.



Maico Gulf LLC certifies that the DYNAIR Model "Box-D 7/7 to 12/12" shown here in are licensed to bear the AMCA Seal. The ratings shown are based on tests and procedures performed in accordance with AMCA Publication 211 and AMCA Publication 311 and comply with the requirements of the **AMCA Certified Ratings Program**.

> BTMF


In - Line Centrifugal Box Fan



GENERAL DESCRIPTION

BTMF is a series of centrifugal inline box fan suitable for applications in residential, commercial, and industrial exhaust and supply ventilation such as bathrooms, offices, factories, shops, bars, gymnasiums, villas etc. They are suitable to convey clean air up to a maximum temperature of -10 to 60°C.

CONSTRUCTION

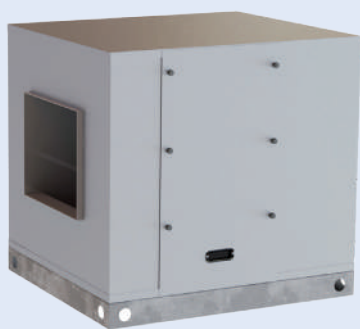
- Box casing manufactured from pre-painted galvanized steel (PPGI) and internally lined with 10mm thickness of polyurethane foam as insulation for noise absorption.
- Single phase maintenance free ball bearing motor with thermal overload protection.
- High efficiency direct drive backward centrifugal impeller with external rotor motor (Motor is IP44, class F)
- External terminal box in self extinguishing technopolymer with IP54 protection.
- Fan inside the cabinet is with AMCA seal. 

(UPON REQUEST)

- Speed regulators.
- C5 coating on outer cabinet.
- IP66 terminal box.

> BOX-T

Belt Driven Double Inlet Box Fans



Maico Gulf LLC. certifies that the DYNAIR model BOX-T 7/7 to 630 shown herein are licensed to bear the AMCA Seal. The ratings shown are based on tests and procedures performed in accordance with AMCA Publication 211 and AMCA Publication 311 and comply with the requirements of the **AMCA Certified Ratings Program**.

GENERAL DESCRIPTION

Belt driven centrifugal cabinet fans with special acoustic lining for improved sound radiation control from 175 to 6,000 CMH airflow range.

The low noise level is due to their plenum, lined with acoustic material that allows a remarkable reduction of noise level, inevitably generated by the fan.

Their main characteristic is the low noise level which makes them ideal for urban environments (apartments, houses, bars, restaurants, gymnasiums, offices) and industrial sites where the noise is a problem.

The low noise level is due to their plenum, lined with acoustic material, that allows a remarkable reduction of noise level, inevitably generated by the fan.

The blower consists of a double inlet double width forward curved centrifugal fan with built-in motor.

CONSTRUCTION

- Profile less cabinet is manufactured in PPGL sheet with removable access panel to allow easy access to fan and motor.
- The blower is fitted using suitable support feet and is completely isolated from the casing by anti-vibration mounts and gaskets.
- Acoustic lining in self-extinguishing techno-polymer.
- Double inlet blower forward curved with direct drive built-in asynchronous motor, single-phase or three-phase, particularly suitable for speed regulation (using the suitable speed regulators shown in this catalogue).
- Flanged inlet and outlet for easy duct work.
- Asynchronous three-phase motors according to international standards IEC 60034, IEC 60072, EMC 2004/108/CE, LVD 2006/95/CE, CE marked, IP 55, class F. Suitable for S1 service (continuous working at constant load).

ACCESSORIES

- Weatherproof protection cover.
- Support feet.
- Outlet terminal with guard.
- Setting shutter.
- Setting shutter with filtering section (standard version with filter in polyester with efficiency 90.1%, class EU4).

BEYOND THE STANDARD PRODUCT

- Version with three-phase double polarity motor (4/6 pole).
- Asynchronous mono-phase motors according to international standards IEC 600034, IEC 60072, EMC 2004/108/CE, LVD 2006/95/CE, CE marked, IP 55, class F. Suitable for S1 service (continuous working at constant load).
- Panels in aluminum.
- Double skin panels (available thickness: 25 or 50 mm) any possible in extruded AL profile
- With pre and bag filter.
- Options with backward curved and sizes more than 630 mm.

DISCHARGE ANGLES

BOX-T

INSPECTION DX	Dx-A1	Dx-A1b	Dx-A2	Dx-A3
INSPECTION SX	Sx-A1	Sx-A1b	Sx-A2	Sx-A3

N.B: Standard discharge angles DX-A1