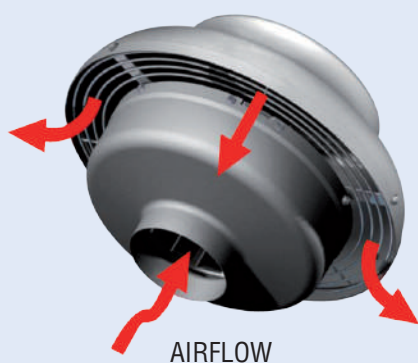
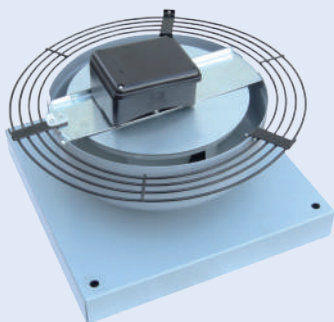
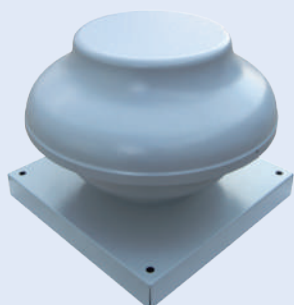


> DRF

Residential Roof Fan



GENERAL DESCRIPTION

DRF is a versatile and robust range of centrifugal roof extract units available in 6 sizes and suitable for vertical and horizontal installation. The protection cowl in highly resistant aluminium is perfectly adapted for exposed areas. DRF compact design and easy installation is made to satisfy the requirements of efficient ventilation in residential, commercial and light industrial applications.

INSTALLATION

- Compact centrifugal roof fan for free or ducted application.
- Horizontal and vertical installation.
- Can be mounted on an exterior wall when roof access is not available.
- Easy solution for a multipoint ventilation need.
- Added benefits of the outdoor installation: free interior space, maximised ventilation and noiseless operation.

MOTOR SPECIFICATION

- Ball bearing motor, permanently lubricated for maintenance-free operation and continuous running.
- Fan and motor assembly balanced for a quiet and vibration-free operation.
- Motor is IP44 protected.

PRODUCT SPECIFICATION

- Available in 6 sizes with performances rating from 264 m³/h to 1444 m³/h (20 to 880 Pa).
- Suitable for clean air temperature from -30°C up to +60°C.
- Cowl in highly resistant aluminium.
- The cowl is removable for access to the motor and wiring connections.
- Cowl's screws in HDG resistant to atmospheric agents.
- Self-cleaning backward bladed impeller with high efficiency and low noise level.
- Protection guard is electroplated.
- Speed controllable for highly efficient and economical airflow.
- CE marked.
- Comply with EN 60335-2-80, B.T. 2006/95/CE, EMC 2004/108/CE.

OPTION

- Speed regulators.

APPLICATIONS

