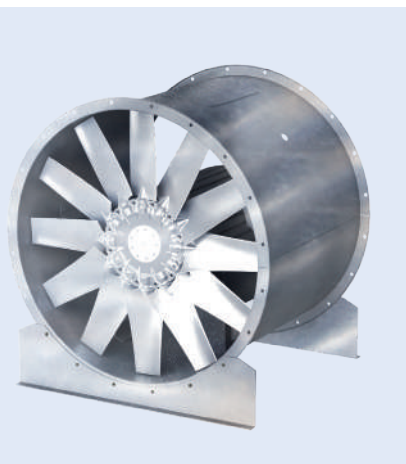


> TA-HP & VA

High Performance Ducted Axial Fans



Maico Gulf LLC certifies that the DYNIAIR model TA-HP 400 to TA-HP 1600 shown herein are licensed to bear the AMCA Seal. The ratings shown are based on tests and procedures performed in accordance with AMCA Publication 211 and AMCA Publication 311 and comply with the requirements of the AMCA Certified Ratings Program. The AMCA Certified Ratings Seal applies to Sound, Air and FEG performance for Models TA-HP 400 to TA-HP 1600 only.



The AMCA Certified Ratings Seal applies to Sound and Air performance for models TA-HP-400-240-12-6, TA-HP-400-240-12-9, TA-HP-400-240-12-12, TA-HP-450-240-12-6, TA-HP-450-240-12-9, TA-HP-450-240-12-12.

DESCRIPTION

The tube axial fans of TA-HP series are used for ducted / non-ducted installation requiring large air flow with relatively low to medium pressure drop, general ventilation and extraction, cooling and refrigeration in industrial, naval, commercial, civil, energy fields, electro-mechanical cooling, environmental control and crop storage, petrochemical process ventilation. This series has the advantage of being smaller in dimension and easier to install. The series consist of different sizes with impeller diameter from 400 to 1600 mm. TA-HP fans can be fitted with motor of different polarity depending upon performances requirements. Suitable for conveying clean air with temperature from -10°C to 60°C.

CONSTRUCTION

- Long casing in mild steel with fixing flanges manufactured according to UNI ISO 6580-EUROVENT standard.
- Protected against atmospheric agents by HDG (Hot Dip Galvanizing) coating.
- Axial impeller with X-ray inspected airfoil profile blades and hub in die cast aluminum with multiple blade configurations for optimum performance.
- Impellers are statically and dynamically balanced according to ISO1940, G 2.5 and AMCA 204, BV-04 standard.
- Impellers provided with variable pitch angles ranging from 16 to 52 degrees.

MOTOR

Asynchronous three-phase motor according to international standard IEC 600034, IEC 60072, EMC 2004/108/CE LVD 2006/95/CE Marked IP 55, IE 2 (only single speed motors) CL F.

ACCESSORIES

- Flat (CCr) protection guard
- Flexible connector (CCga).
- Inlet / Outlet bell mouth (CCbo).
- Silencer with or without pod, in three lengths (CCsa & CCsb).
- Counter Flange (CCf) / counter Flange with collar (CCfc)
- Anti-Vibration mounts

BEYOND STANDARD PRODUCT

- Casing protection by epoxy paint and stainless steel
- Higher fan diameters up to 2.0 meters.
- Multi-stage versions for higher pressure development
- IE3 motors (only single speed)
- Backdraft damper
- Completely reversible impeller

VA series is tube axial fans with vane guide